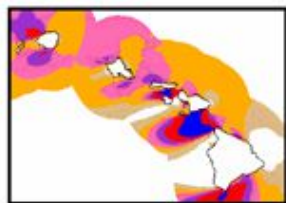
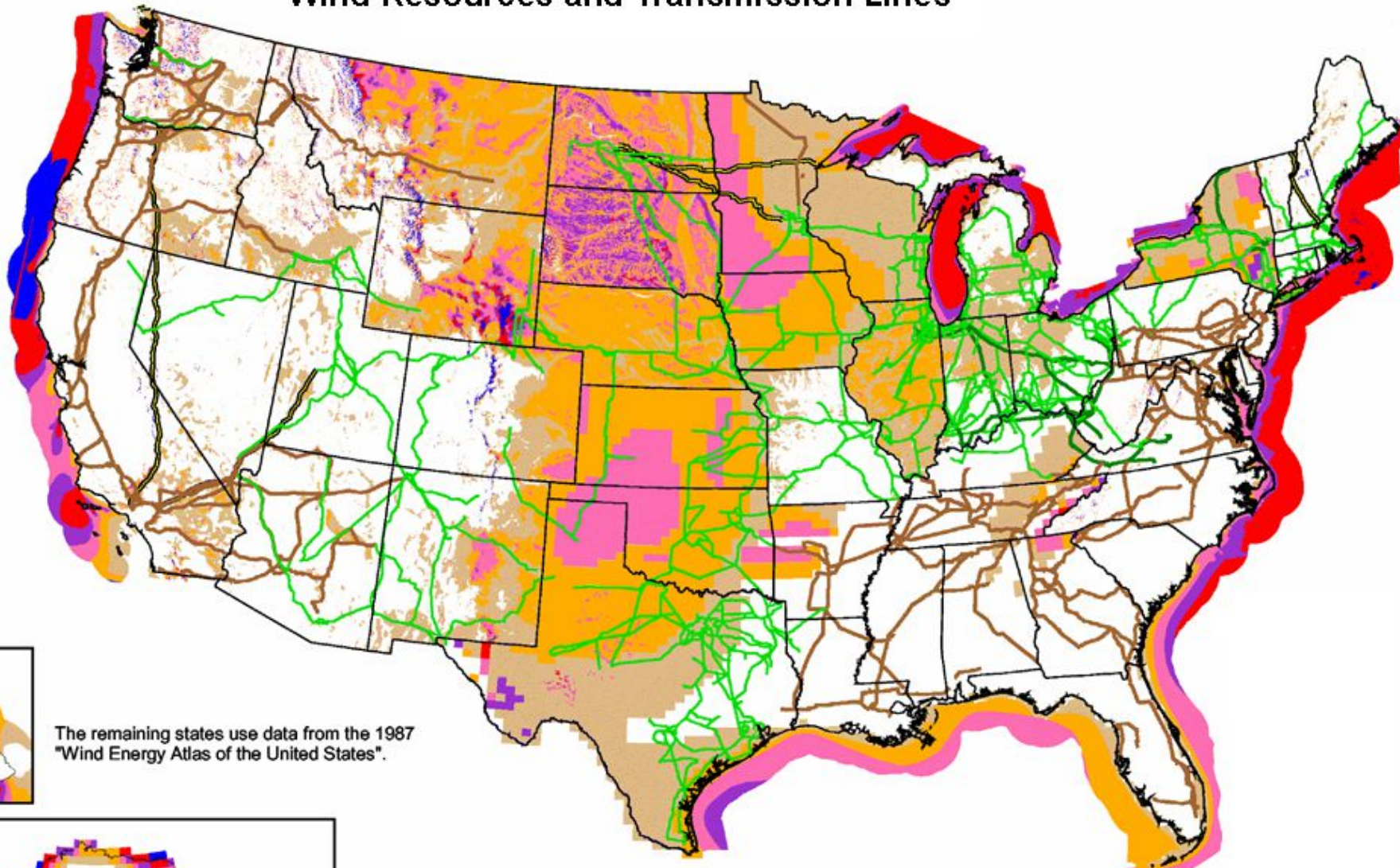
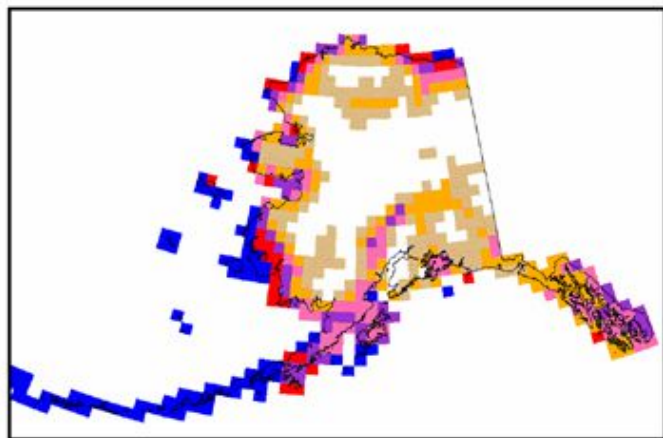


NREL Updated Maps:
 Arizona (2003)
 California (2002)
 Colorado (2004)
 Connecticut (2001)
 Delaware (2002)
 Hawaii (2004)
 Idaho (2002)
 Illinois (2001)
 Indiana (2004)
 Maine (2001)
 Maryland (2002)
 Massachusetts (2001)
 Michigan (2004)
 Missouri (2005)
 Montana (2002)
 Nebraska (2005)
 Nevada (2003)
 New Jersey (2002)
 New Hampshire (2001)
 New Mexico (2003)
 North Carolina (2002)
 North Dakota (2000)
 Ohio (2004)
 Oregon (2002)
 Pennsylvania (2002)
 Rhode Island (2001)
 South Dakota (2001)
 Texas mesas (2000)
 Utah (2003)
 Vermont (2001)
 Virginia (2002)
 Washington (2002)
 West Virginia (2002)
 Wyoming (2002)

Wind Resources and Transmission Lines



The remaining states use data from the 1987 "Wind Energy Atlas of the United States".



Wind Power Classification				
Wind Power Class	Resource Potential	Wind Power Density at 50 m W/m ²	Wind Speed ^a at 50 m m/s	Wind Speed ^a at 50 m mph
2	Marginal	200 - 300	5.6 - 6.4	12.5 - 14.3
3	Fair	300 - 400	6.4 - 7.0	14.3 - 15.7
4	Good	400 - 500	7.0 - 7.5	15.7 - 16.8
5	Excellent	500 - 600	7.5 - 8.0	16.8 - 17.9
6	Outstanding	600 - 800	8.0 - 8.8	17.9 - 19.7
7	Superb	800 - 1600	8.8 - 11.1	19.7 - 24.8

^a Wind speeds are based on a Weibull k value of 2.0